

Hewlett Packard
Enterprise

安全優先的AI 驅動智能網路運營

Alex Chen 陳清淵. CC, CISSP, CISM
副總經理, HPE Aruba Networking Taiwan



當提到Aruba 時會想到?



Wi-Fi 7 Indoor



730/755 Series

Wi-Fi 6E Indoor



610 Series

630 Series

650 Series

Hospitality



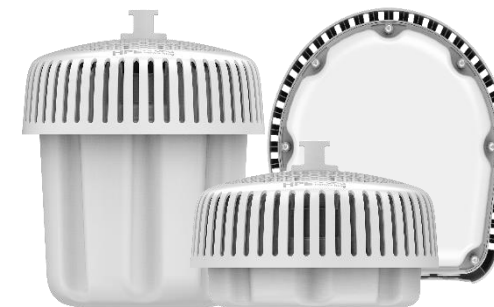
600H Series

Remote



600R Series

Wi-Fi 6E Outdoor & Hazardous



670 and 670EX Series

Wi-Fi 6 Outdoor & Hazardous Loc.



518 Series

560 Series

570 Series

Wi-Fi 6 Indoor



500 Series

510 Series

530 Series

550 Series

Wi-Fi 6 Hospitality



500H Series

Wi-Fi 6 Remote



500R Series



560EX Series

570EX Series

580/580EX Series

2024 Gartner® Magic Quadrant™ for Enterprise Wired and Wireless LAN Infrastructure



Gartner連續18年蟬聯
領導象限具備遠景與完整解決方案

HPE Aruba Networking's 18 years of placement includes HPE (Aruba) in the Magic Quadrant for Wired & Wireless LAN Infrastructure from 2015-2024 (9 years, report not published in 2023), Aruba Networks in the same Magic Quadrant from 2012-2014 (3 years) and in the Magic Quadrant for Wireless LAN Infrastructure from 2006-2011 (5 years, report not published in 2009). Aruba Wireless Networks in the Magic Quadrant for Wireless LAN Infrastructure, 2005: Leaders and Challengers

This graphic was published by Gartner, Inc. as part of a larger research document and should be evaluated in the context of the entire document. The Gartner document is available upon request from HPE.

Gartner, Magic Quadrant for Enterprise Wired and Wireless LAN Infrastructure, Tim Zimmerman, Christian Canales, Nauman Raja, Mike Leibovitz, March 6, 2024. GARTNER is a registered trademark and service mark of Gartner and Magic Quadrant is a registered trademark of Gartner, Inc. and/or its affiliates in the U.S. and internationally and are used herein with permission. All rights reserved. Gartner does not endorse any vendor, product or service depicted in its research publications, and does not advise technology users to select only those vendors with the highest ratings. Gartner research publications consist of the opinions of Gartner's research organization and should not be construed as statements of fact. Gartner disclaims all warranties, expressed or implied, with respect to this research, including any warranties of merchantability or fitness for a particular purpose.

HPE Aruba Networking CX Switch portfolio - access to core to data center



Data Center

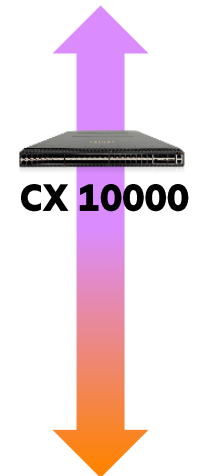
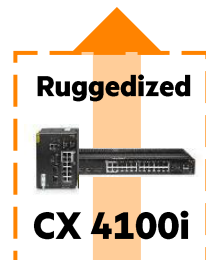
HP ProCurve boasts first commercial Ethernet switch in space

By [Liz Tay](#)

Jun 13 2008 3:33PM



The recently-docked Columbus section of the International Space Station is claimed to host the first commercial Ethernet switch in space.



SPONSORED BUSINESS CONTENT



AI for smarter decisions and better business outcomes. Learn more.

didx

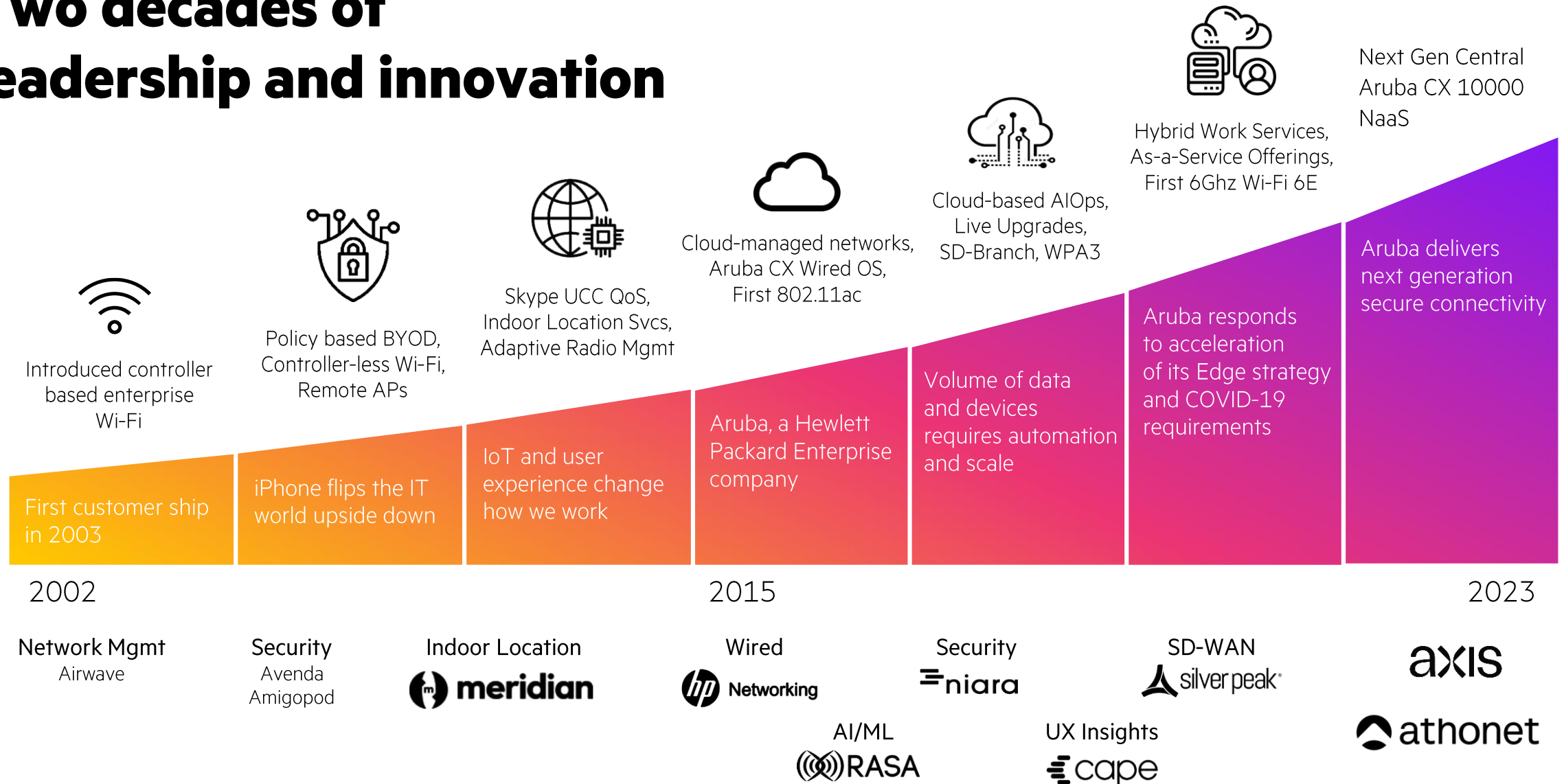


dianomi

RELATED ARTICLES

End-to-End Portfolio for the Enterprise

Two decades of leadership and innovation



CUSTOMER FIRST
CUSTOMER LAST

你是我的最初，你是我的最終
你是我的唯一



Deliver what users and stakeholders expect



Student Priorities

- ✓ Performance and roaming
- ✓ College experience
- ✓ Home-like residence hall



Faculty Priorities

- ✓ Save time
- ✓ Secure data
- ✓ Teach students in all modalities



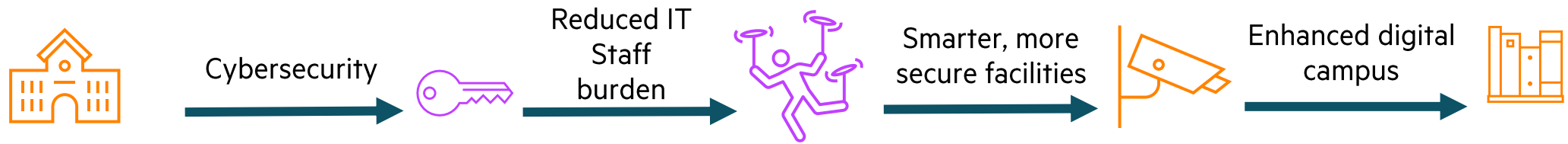
Facilities Priorities

- ✓ Cost savings
- ✓ Efficient operations
- ✓ Safe Campus

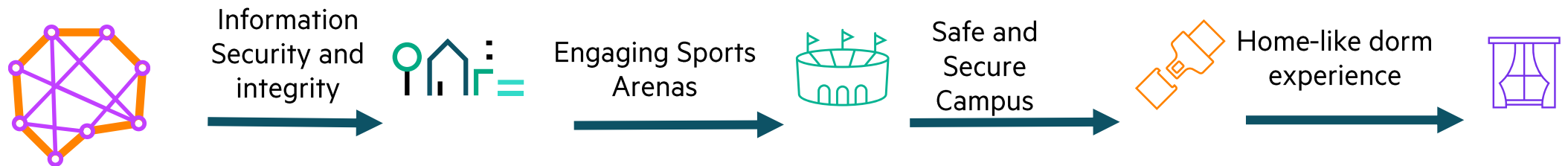


Network enabled higher education outcomes and use cases

Driving Outcomes



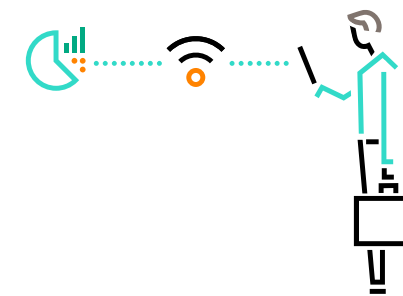
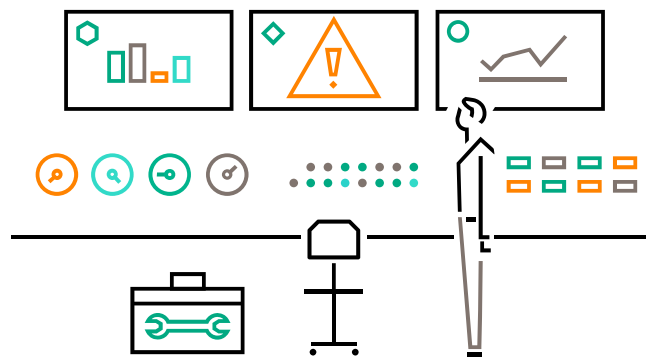
Enabling Use Cases



Designed for the modern IT operator

Resiliency and agility for new campus demands

HPE Aruba 網路為所有裝置和使用者提供安全可靠的連接，動態增強整個校園到家庭網路的資料安全性，並以家庭般的簡單性改善學生體驗。



Unify & simplify

Access across locations, users and IoT

Automate & secure

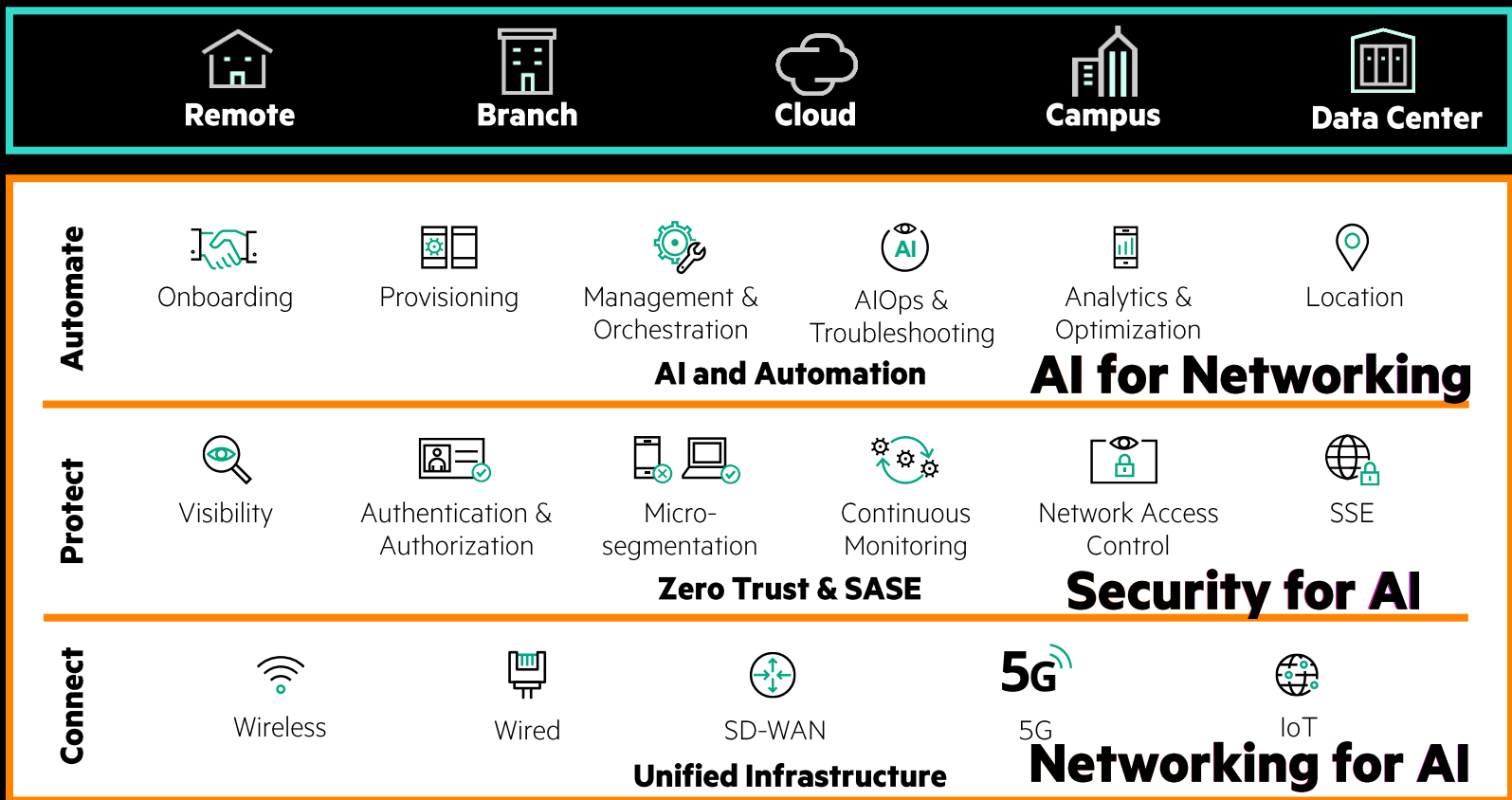
IT operator experiences with AIOps

Choice

Your network, your way with agile NaaS

安全至上，AI 驅動智能網路

HPE Aruba Networking Security-First, AI-Powered Framework



HPE GreenLake for Networking

Powered by HPE Aruba Networking Central



網路維運的未來

AI for Networking Empowering IT teams for an accelerated, AI-driven future

Accelerating **GenAI** for
Networking
Realising greater efficiencies



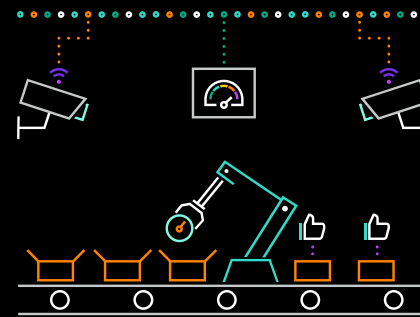
By 2026, **60%** of network operations personnel will rely on **Generative AI** for Day 2 management, up from less than 5% in early 2024¹

Network as a **Zero Trust** security solution



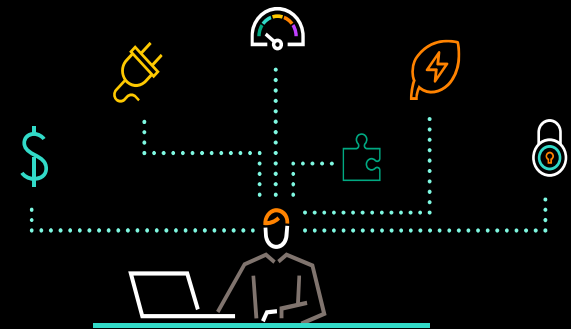
46% ITDMs say **cybersecurity concerns** impact their organizations' willingness to invest in innovative technologies²

Growing significance of
數位體驗監控
(DEM)



Digital Experience Monitoring becomes a strategic investment area, with deployments expected to rise from **60% to 90%** in 2027³

Sustainability



83%⁴ of business leaders say **sustainability** activities create value of their organization

¹Gartner: Prepare for Generative AI in Network Operations , Mar 2024

²The innovation vs. risk conundrum. Hewlett Packard Enterprise. 2023

³Gartner Market Guide for Digital Experience Monitoring, Nov 2023

⁴ 2022 sustainability survey :use Sustainability to drive vlaue and mitigate disruption ,Sept 22

AI-powered: Aruba Next-Generation Cloud-Native Central Platform

有數據才有AI

Reduce manual configuration and administrative work

15%+ Improve network performance

Enhanced Visibility & Anomaly detection

Up to **99%** Accuracy of analysis for known clients, unknown rate of <5%

Improve the user experience

95% Calls to IT help desk assistance are reduced due to HPE Aruba network Wi-Fi usage issues

Industry-leading data lake



Wireless



Wired



SD-WAN



5G



IoT

Unified Infrastructure

180K+

Central accounts

~6M

devices under mgmt

~1B

endpoints served

30+

Industry verticals

AI Ops For Improved Troubleshooting And Issue Resolution

- Automation is reduced MTTR (Resolve) and MTTI(Identify) · Improve IT efficiency

POWERFUL FEATURES

AI Search with GenAI

AI insights

AI assurance indicators

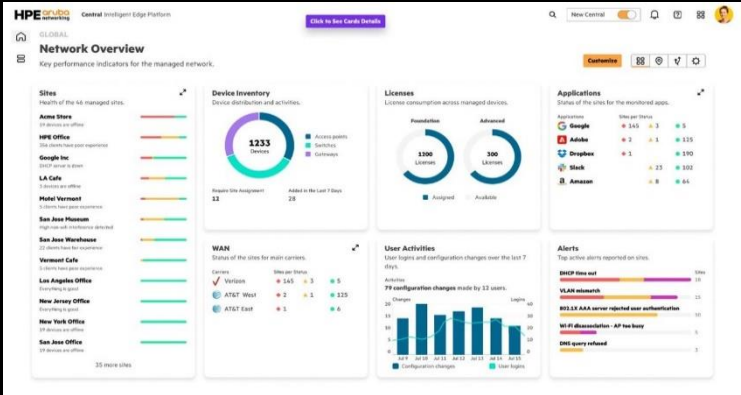
Client insights

Incident Detection

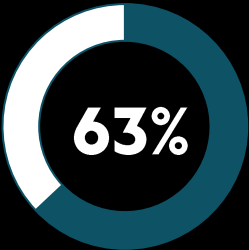
Gen AI
Large Language Models (LLMs)

Classification AI
Clustering, Correlation, Regressions

POWERFUL RESULTS

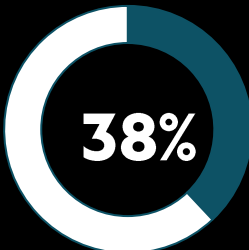


Faster MTTR



Of surveyed customers resolve network or user issues at least **50% faster**

Fewer support tickets

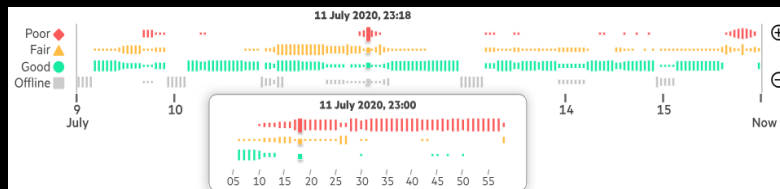
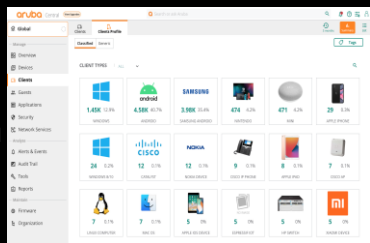
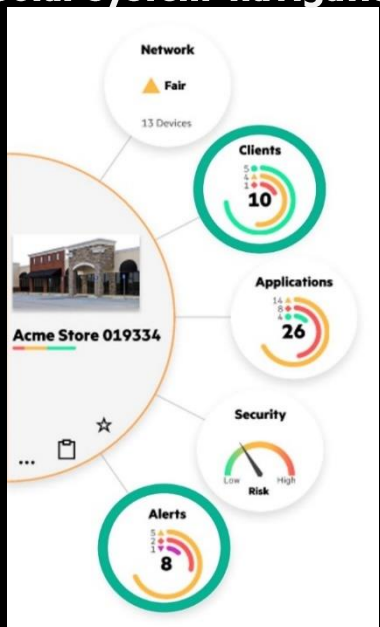


Of surveyed customers have reduced IT trouble tickets by at least **50%**

Operator-centric, 直觀的用戶體驗

簡化第0天到第N天的操作

ZTP & 'Solar system' navigation



Industry-first network 'time travel'

Define, discover and profile

AI Insights and updates & troubleshoot

Configure and provision

Monitor, AI Green AP and Sustainability

Onboard infrastructure

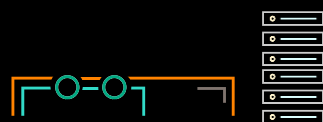
Manage policies & Audit Trail

DAY 0

DAY N



Edge



Campus and Data Center



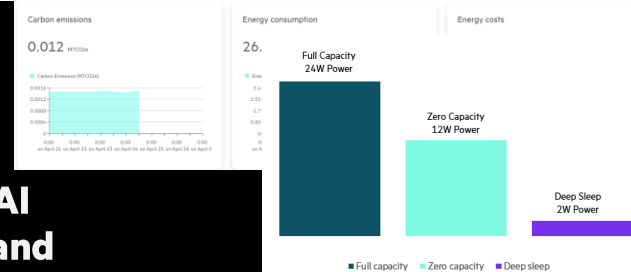
Public Cloud

Experience

Connected, has a communication issue with the network due to a missing VLAN in the datapath.

Connected Since July 9 2021, 12:15

Connectivity



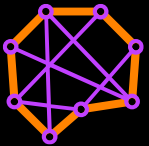
aruba Central

Customer: TSMC-Centr...

Audit Trail

Occurred On	Description
Apr 25, 2024, 16:30	Country Code not set. Config not updated
Apr 25, 2024, 16:30	System creation successful and moved to group default
Apr 25, 2024, 1	Configuration difference
Apr 25, 2024, 1	ic not successful
Apr 25, 2024, 1	ic not successful
Apr 25, 2024, 1	ic not successful
Apr 25, 2024, 1	--- running-config
Apr 25, 2024, 1	+++ candidate-config
Apr 25, 2024, 1	@@ -1.0 +2.2 @@
Apr 25, 2024, 1	+user admin group administrators
Apr 25, 2024, 1	+clock timezone utc
Apr 25, 2024, 1	@@ -4 +5.0 @@
Apr 25, 2024, 1	-radius-server host 172.24.20.72 key

Meet the newest member of your IT Team



A CONVERSATIONAL CO-PILOT PREVIEW

- ✓ Privacy Enabled Security
PII & CII protected
- ✓ LLM trained with public HPE data
- ✓ Contained and hosted on HPE Greenlake Cloud Platform
- ✓ HPE Artificial Intelligence (AI) Ethics Council

Aruba Central

GLOBAL

Network Overview

Access your network

Sites

Sites by health.

API- Test- TME

High 2.4 GHz frame retries

EET-Warehouse HOU

High 2.4 GHz noise floor im

EE-DC1

Power supply failure on 1. d

EET-Warehouse ATL

High 2.4 GHz frame retries

SJCCP

3 devices are offline.

EET-HQ-Campus

Power supply failure on 1. d

Toronto (YYZ) - Bra

Low signal strength notice

DC-Site-01

Power supply failure on 2. d

EET-Oakmead-Camp

1 device is offline.

EET-Alpharetta-Cam

Low receive rate noticed on

Central Assistant

Start a conversation, by asking anything ...

I have some headless IoT devices that do not support 802.1X. I don't want them to use the same ... >

Tell me about the AI power-save recommendation for access points. >

Are there any ongoing issues in my network? >

do any of my sites qualify for this feature? >

whcih alert should i work on first? >

Ask anything...

Application與AI 驅動的用戶端分析

Define, Discover and Profile what's Connected to the Network



陳九妹 – Network Operator

學校那麼多用戶的流量可視性與部署了許多物聯網設備，但在識別和保護這些設備方面遇到了困難

Only solution with AI-powered IoT profiling and **behavior analysis** for segmentation accuracy

Traffic flow visibility for high classification efficacy and enhanced protection

Advanced filtering and custom group tagging aid in policy creation and enforcement

Classification

Category	Function	Vendor	Model/OS
Computers & Servers	Computer	Windows	Windows 8/10/11

Tags

windows IoT

Behavior Analysis

An IoT tag has been applied based on client behavior and attributes over a multi-day time period.

Time on Network

Application Variety

Roaming

Connectivity Performance

Throughput	873 bps	Retry Frames	3.60 %
Throughput	1.52 Kbps	Throughput	2.40 %
Signal Quality	61 dB	Transmit/Receive Rate	173 Mbps
		Throughput	117 Mbps

Classification

Category	Function	Model/OS
Computers & Servers	Computer	Windows 8/10/11

Classified By

System Rule

Conditions

Attribute	Value
DHCP Option55	1,3,6,15,31,33,43,44,46,47,119,121,249,252

Static Attributes

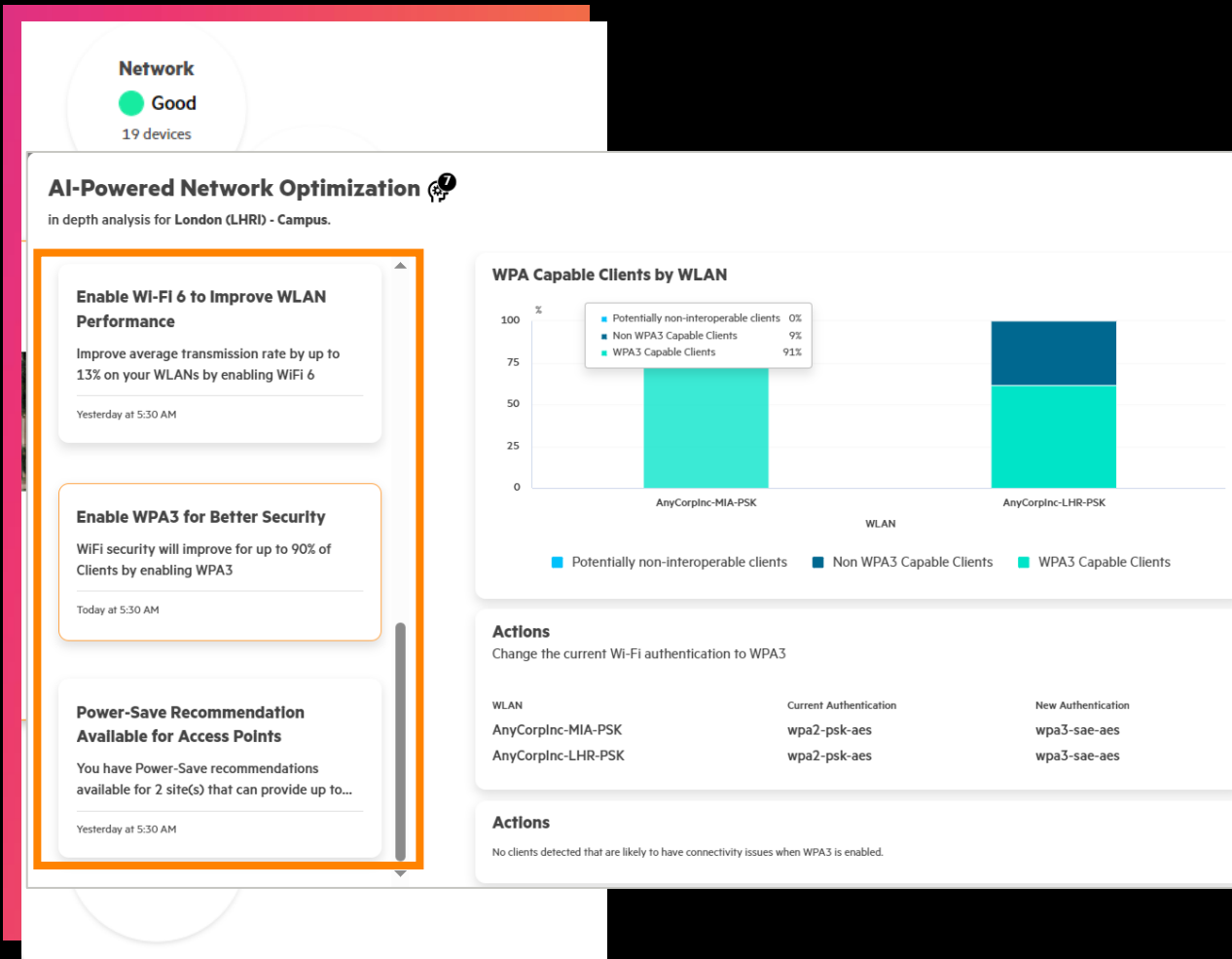
DHCP	Value
Option 55	1,3,6,15,31,33,43,44,46,47,119,121,249,252

Client Details: ANYCORP\arobbins

- Site: London (LHRI) - Campus
- Network: Good (CP-LHRI-AP03)
- Applications: 14
- Security: Low Risk
- Alerts: 0

AI 驅動的建議

Free up valuable IT cycles and reduce risk with proactive optimization insights



- **Custom, actionable recommendations** at a global/per-site basis
- AI/ML models trained and re-trained **weekly** on **data from anonymized peer groups** with similar environments
- **Examples –**
 - 802.11ax recommendations for Wi-Fi performance
 - AP power save recommendations to support sustainability efforts
 - WPA3 insights for improved security posture and **more!**

Aruba User Experience Insight (UXI)

UXI
User Experience Insight

All Groups ▾

Search, Filter, Notifications, More icons

Experience

WW-Test, Aruba-VN, THZ

Services

Wi-Fi, Ethernet, DHCP, Gateway, DNS

Internal

MOHE, CPPM, Kai ClearPass, Kai iPerf3

External

Zoom-HKG, Baidu, Dropbox, Facebook, Google Drive, Google Mail, Microsoft Online, Microsoft Teams

Sen
Pur
dev
wire
test



Securely powering the Edge for **Innovative organizations**



500K

Customers served across Americas, Europe, Middle East, Africa, Asia Pacific, and Japan

100+

130 WW R1¹ Universities POWERED BY HPE Aruba Networking

Security Certifications Strong Enough for Governments

Common Criteria, FIPS, and DODIN-APL Certified Solutions²



Thank you

Security First, AI-Power Networking

